

## PRO-FOUL 2001 INSTRUCTIONS

Congratulations on purchasing the finest full featured universal replacement foul light available. With a little care, you will get many years of dependable use from your new foul lights.

### How to Install

1/ Remove the covers at the foul line, and remove the old photo cells and light bulbs & old lenses. Be careful not to lose the existing wires under the lane if you plan to re-use them.

2/ Mount the reflectors centered on the foul line, under the capping that is common to two lanes. Drill 2 1/8" diameter holes to mount the reflector brackets on – being careful that they are centered on the foul line. Peel the self adhesive backing from the reflector and apply them to the brackets. Check that you have at least a 1 1/8" diameter hole for the reflector to 'see' the beam through.

3/ Place the 90021A sensors inside the old foul covers. Check that you have at least a 1 1/8" diameter hole available for the sensor to clearly see the reflector through. Center the sensor on the foul line, and drill 2 1/8" diameter holes to mount the sensors with.

4/ Remove the old foul controllers on the curtain wall and mount the PRO-FOUL box, part number 9009 in their place.

5/ Connect the PRO FOUL box to the Foul Controllers at the foul line (as per figure 1) with the existing wires or use 4 conductor telephone "station wire", which is commonly available and inexpensive.

6/ Test your masking unit foul indicator lights by plugging them into an outlet. Check that the bulbs used are no larger than 40 Watts. A larger bulb will cause the 1A fuse on the front panel to blow. Once you are satisfied, plug them into the foul indicator outlets on the Pro-Foul box.

7/ Double check all wiring for good connections or shorts, then plug the unit in. The power indicator on the Pro-Foul box should flash several times, after which it will stay on. If all is well, the short circuit indicators should stay off, unless there is a short in the wiring.

8/ Examine the foul sensors, if aligned properly, the light will be off. When the beam is broken, the red light on the sensor will turn on and will signal the Pro-Foul box to alarm.

9/ Double check the sensor alignment by covering half of the reflector, if the sensor is well aligned, the unit will not alarm.

10/ Adjust the foul volume on the Pro-Foul box to the desired level.

11/ The RY output is for automatic scoring. Brunswick compatible scoring systems may be directly connected to this for the foul signal. Please contact Joystick Scoring for details on AMF compatible scoring systems.

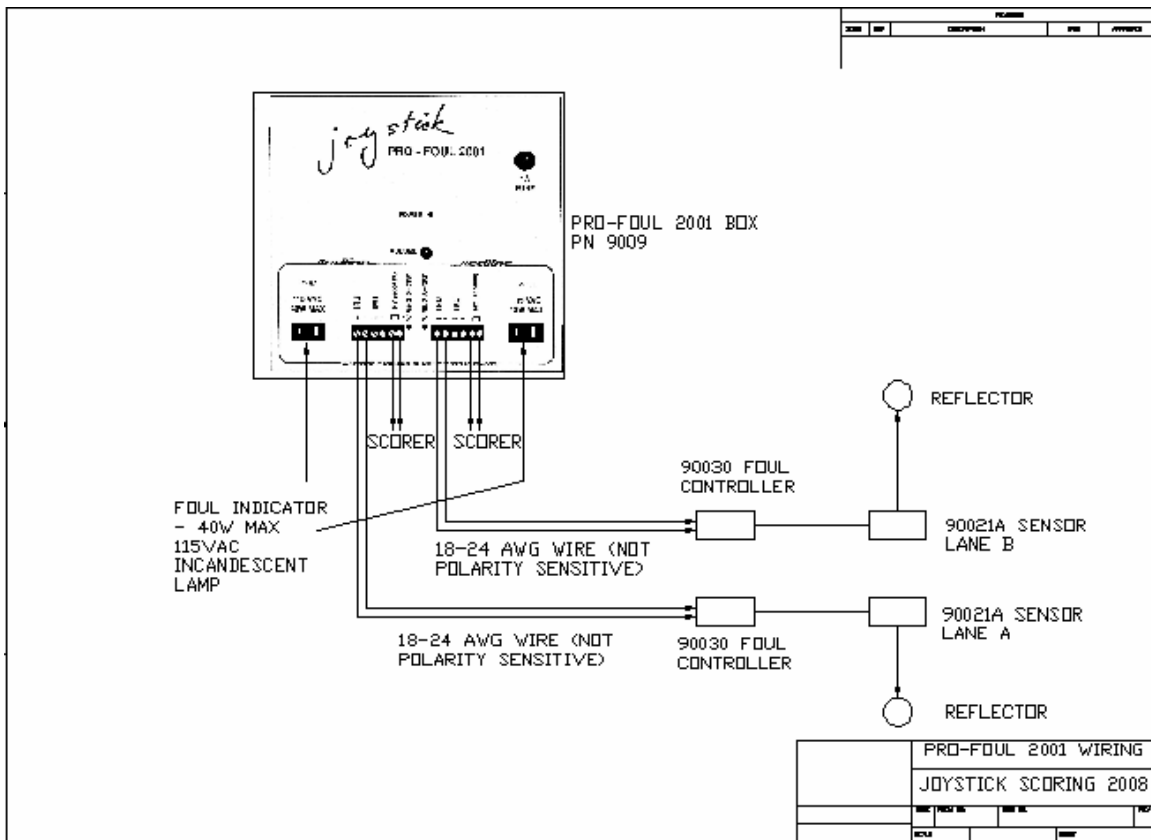


Fig 1



Fig 2 – 90021A Sensor in foul cover



Fig 3 – 90021A Sensor with 90030 controller



Fig 4 – Pro-Foul 2001 Kit

© 1990 – 2008 Joystick Scoring Limited [www.joystick.ca](http://www.joystick.ca)

Joystick Scoring Limited  
1621 McEwen Drive, Unit 40  
Whitby, Ontario  
L1N 9A5

TEL 905 432 2832  
Fax 905 432 7071